

About First Baptist Church Mascoutah

All preschool teachers have been screened and a background check completed. Classes are staffed with one teacher and one teacher's aide. All staff is required to complete and maintain child CPR certification. Teacher training is conducted throughout the year.

Lighthouse Preschool
of First Baptist Church Mascoutah (FBCM)
Heidi Pierce, Director/Teacher
Lori Graf, Teacher's Aide
(618) 566-2195
fbclighthousepreschool@gmail.com

FBCM Pastor
Doug Winkler
(618) 566-2195
doug@fbcmascoutah.org

First Baptist Church Mascoutah
816 W. Church St.
Mascoutah, IL 62258
(618) 566-2195
www.fbcmascoutah.org

Sunday School/ConneXion Groups – 9:45am
Sunday Morning Worship – 10:45am
Wednesday AWANA – 6:15pm (Sept-May)

Lighthouse Preschool

First Baptist Church
Mascoutah, IL



Our Mission

Our mission is to provide a Christ-centered preschool education for church and community children.

Our Goals

- To teach truth from a biblical perspective
- To encourage hands on learning
- To build relationships with children and families
- To provide a fun and exciting learning curriculum
- To offer academic learning opportunities that include Bible stories, math and reading readiness, science, music, and physical education

Our Program

Preschoolers are very unique individuals and do not learn in the same way as older students. Our preschool program will meet the individual needs of each child through active learning. Learning centers will individualize the learning experience for each student. The children are given many activity choices; including group times, art projects, block play, dramatic play, writing, manipulative, and science, math, and nature materials. The children are free to choose which activities interest them the most, but encouraged to try many.

Curriculum

Individual, small, and large group activities will be presented to help the child explore his interests and to foster his physical, language, cognitive, and social and emotional development. In addition to learning centers and planned activities, a phonics curriculum will be presented throughout the school year. Gentle bible stories/lessons will be presented each week. Parents will receive regular updates detailing curriculum, special activities, and upcoming events.

Discipline Standards

Discipline policies are necessary in order to secure a safe environment for all children, to encourage learning, and to promote respect for self and others. Teachers relate to children by offering choices and utilizing natural consequences for their choices. Teachers will help children achieve success in regulating their behavior by:

- Restating the rules to the entire class
- Standing near a child when the situation merits
- Making eye contact with the child
- Redirecting the child's actions to appropriate behavior
- Changing activities if children appear bored
- Moving the child to a different location
- Praying for the child

Parents will be provided with a "Student Handbook for Parents" to ensure everyone is in agreement with the disciplinary plan.

Days of Operation

Lighthouse Preschool is in session Monday through Friday from 8:30 to 11:30 am.

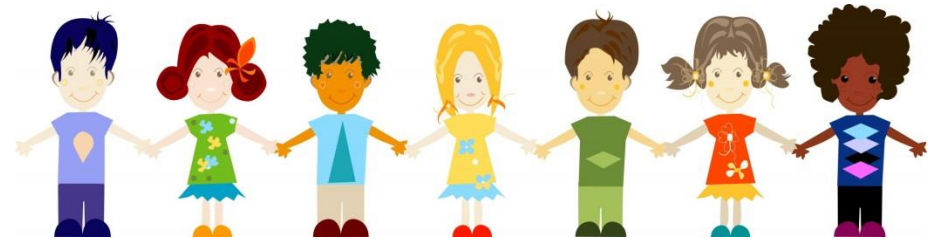
Our school year consists of two semesters. The first semester will begin mid-August and concludes late in December. The second semester will begin early January and conclude in mid-May. Start dates and holidays will follow public school schedules.

Enrollment

Children ages 3 to 4 will be accepted. Enrollment is open to all children who meet the age requirement.

Lighthouse Preschool is a church sponsored preschool program founded on the principles of Christian faith.

Lighthouse Preschool admits students of any race, color, and national or ethnic group.



Session Options:

3-Day Preschool \$105/month (Monday, Wednesday, Friday)

This session is available to children 4 years old
Children must be 4 on or before September 1st

2-Day Preschool \$75/month (Tuesday and Thursday)

This session is available to children 3 years old
Children must be 3 on or before September 1st