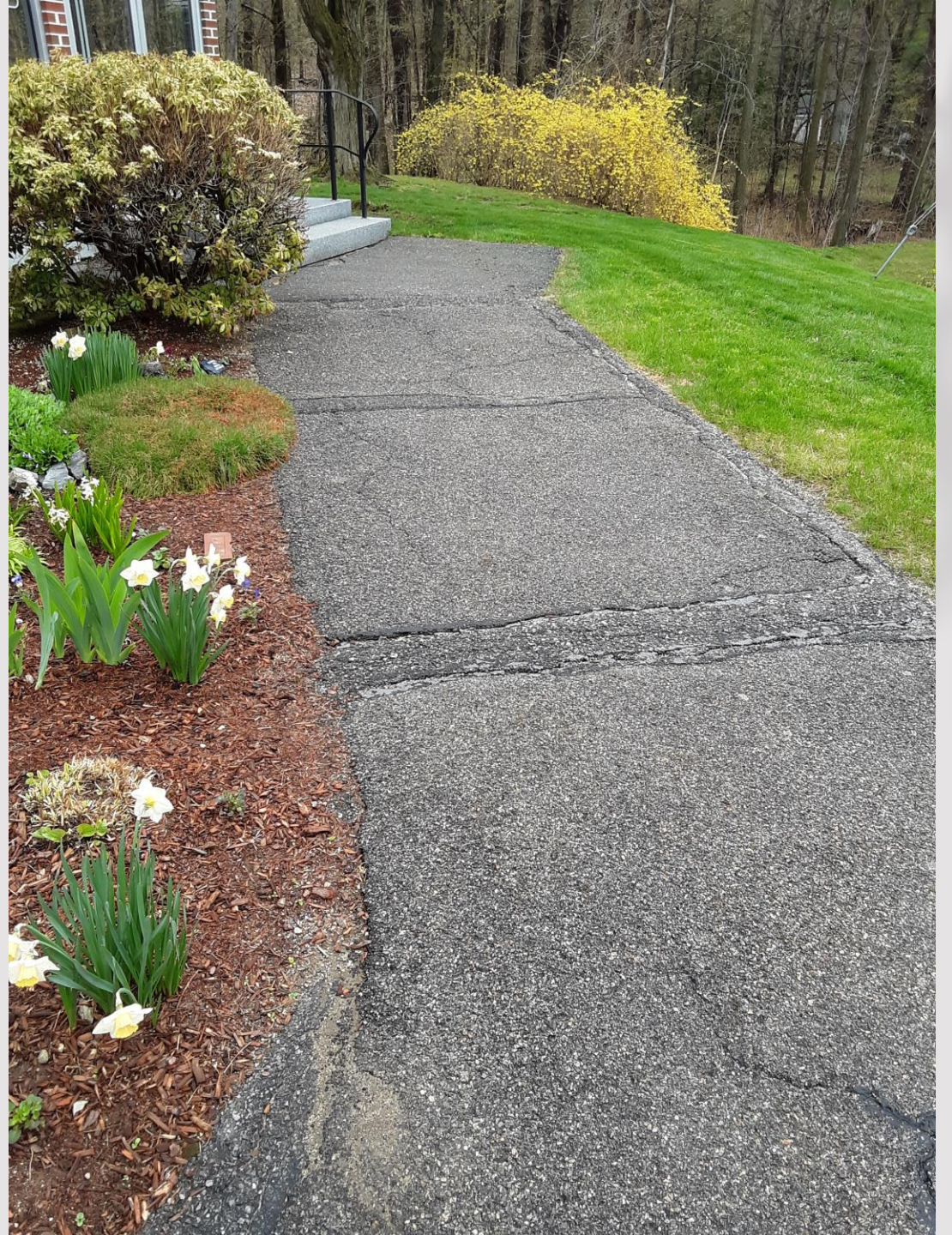
A background of a complex network graph with numerous nodes and connecting lines, rendered in a light gray color.

Church Walkway Replacement Project

May 2022

BEFORE

“Out with the old;
and in with the new!”









DURING

“The crew is here and
ready to roll!”







DURING

“It’s all got to go!”



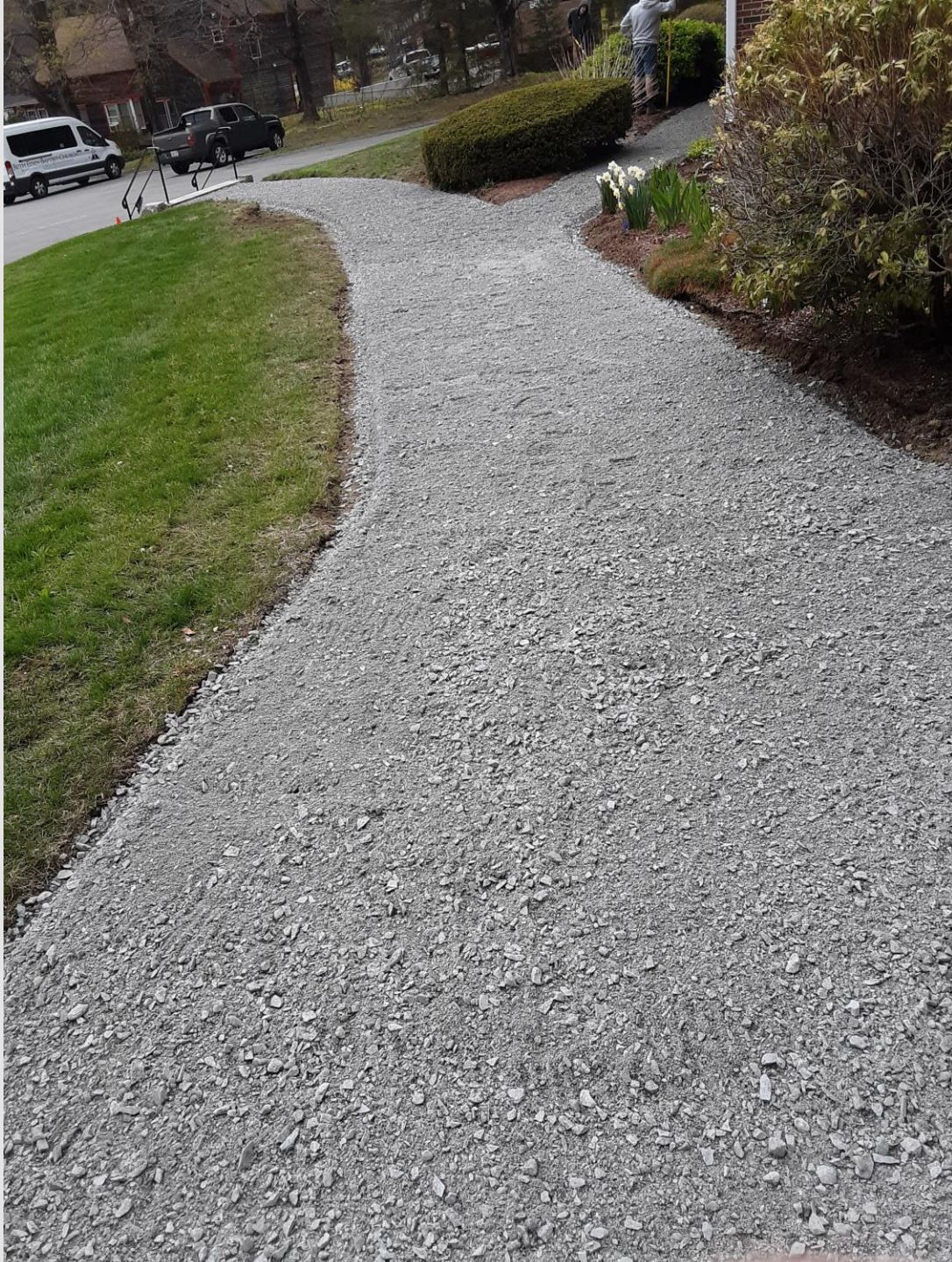




DURING

“Laying a Good
Foundation!”





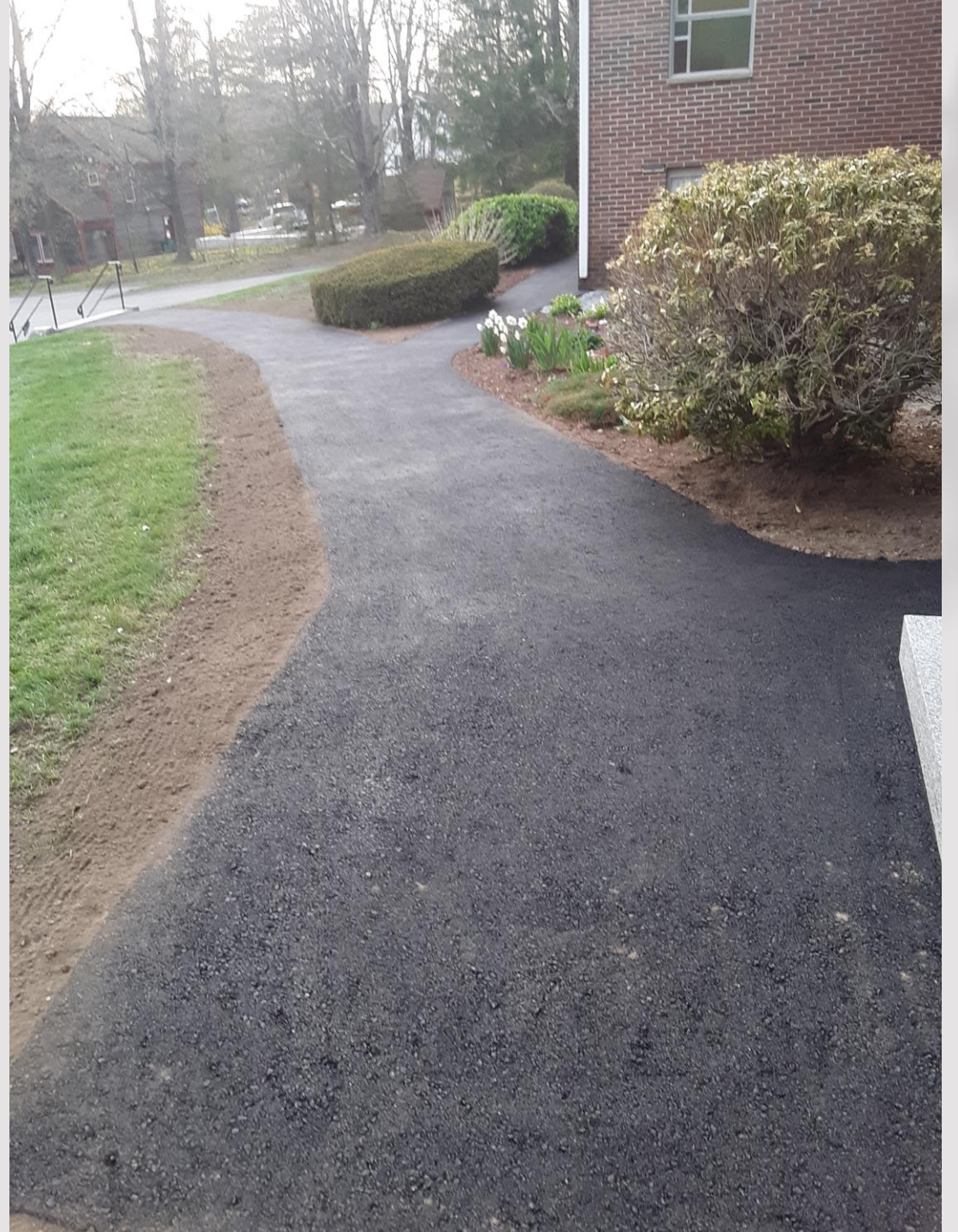




AFTER

"All wrapped up &
ready to use!
Looking good!"





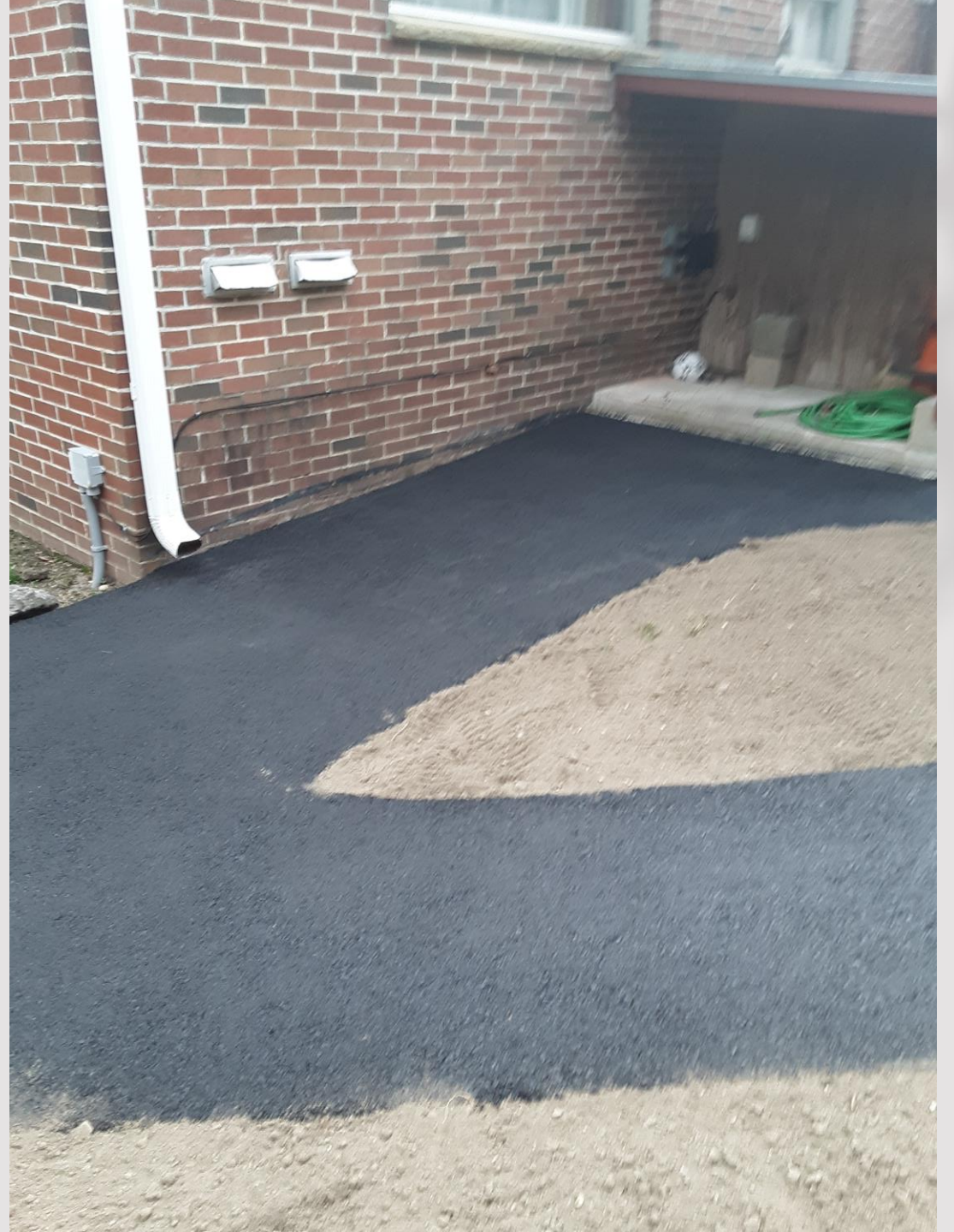




Photo Credits

- We want to extend a special thank you to Steve Allaire for being the onsite observer facilitating this project.
- We also want to gratefully acknowledge Steve Allaire for taking all the photographs included in this slideshow.